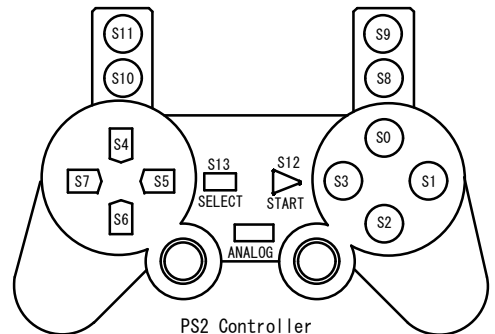
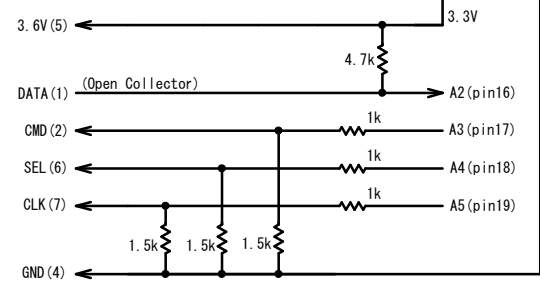


- 1. DATA
- 2. CMD
- 3. +7.6V (CD-ROM)
- 4. GND
- 5. +3.6V
- 6. SEL
- 7. CLK
- 8. non
- 9. ACK



PS2



		Pin19	Pin18	Pin17	Pin16	Pin15	Pin14
		A5	A4	A3	A2	A1	A0
PORTC (DDRC)		bit5	bit4	bit3	bit2	bit1	bit0

		Pin13	Pin12	Pin11	Pin10	Pin9	Pin8
		D13	D12	D11	D10	D9	D8
PORTB (DDRB)		bit5	bit4	bit3	bit2	bit1	bit0

	Pin7	Pin6	Pin5	Pin4	Pin3	Pin2	Pin1	Pin0
	D7	D6	D5	D4	D3	D2	D1	D0
PORTD (DDRD)	bit7	bit6	bit5	bit4	bit3	bit2	bit1	bit0